

To: All Concerned

August 5, 2019
Nissui Pharmaceutical Co., Ltd.

New Service Launched: @BactLAB™, the Colony Counter Global Service

Nissui Pharmaceutical Co., Ltd. (Headquarters: Tokyo, Taito-ku, Representative Director, President and CEO: ONO, Tokuya) is pleased to announce that @BactLAB™, an application that uses Amazon Web Service (AWS) Cloud and Artificial Intelligence (AI) technologies to enable quick and easy counting of bacterial colonies, is now available to overseas users of CompactDry™. The launch of this application is part of the company's strategy of active investment in areas of new growth, for the purpose of contributing to the development of overseas markets and quality control processes in relation to food hygiene.

Since August, 2018, a limited number of our overseas customers have been testing and using @BactLAB™, a colony counter application developed exclusively for CompactDry™, an easy-to-use medium for measuring bacteria count and also our most important product for overseas customers. During this phase we made several improvements to the application, such as faster counting of colonies, collecting and utilizing AI learning data, new convenience features and additional functions, all of which are now included in the released service.



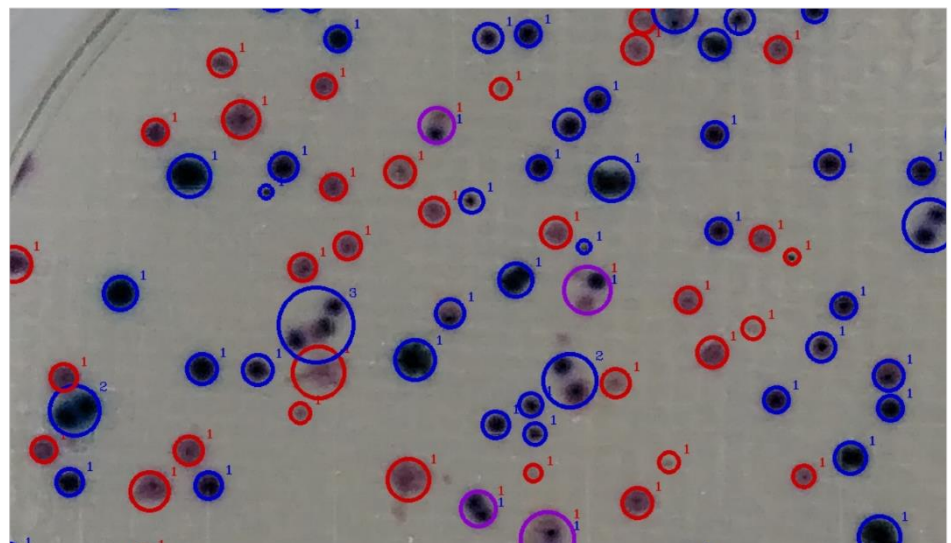
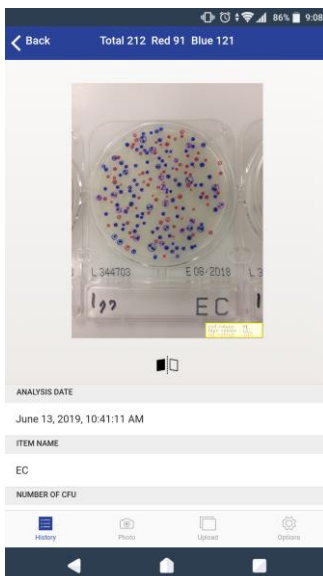
@BactLAB™ official website: <https://www.nissui-pharm.co.jp/english/products/global/bactlab/>

Application available at: Google Play / Apple Store / Amazon Appstore / Online Service



@BactLAB™ Service Overview

- Auto-count with global cloud access, available on multiple devices (PC / Android / iPhone)
 - Bacteria counting for CompactDry™, by using the Amazon Web Service (AWS) cloud service and Artificial Intelligence (AI) technology.
 - Cloud-storage function of counted data
 - Exportable reports (in .csv file or .jpeg file format)
 - Chat Bot support on the official website
-
- * This service is an application designed exclusively for CompactDry™ customers.
 - * We recommend a Wi-Fi environment when using the smartphone app.
 - * Depending on the target image, there may be a counting error of up to 8%.
 - * A colony count result of “0” does not indicate a negative result.
 - * The cloud image recognition technology used in this service is an AI Technology for image recognition system, co-developed by Nissui Pharmaceutical Co., Ltd. and Hitachi Solutions, Ltd.
 - * Nissui Pharmaceutical takes no responsibility for the analysis results provided by this service.



Screenshot: Example of counting colonies cultured in CompactDry™

CompactDry™ EC (*Escherichia coli* / Coliforms)

E.coli = Blue / Blue-Purple colonies

Coliforms = Red and/or Blue colonies

Enlarged image of colony count (right side)

Blue circle drawing = *E.coli*

Red circle drawing = Coliforms except *E.coli*

Purple circle drawing = *E.coli* and Coliforms

Number around circle = Number of colonies

Notices and List of Trademarks appearing on Service Representations and Specifications

- CompactDry™ and @BactLAB™ are trademarks or registered trademarks of Nissui Pharmaceutical Co., Ltd.
- Google, Google Play, Android and other such marks are trademarks of Google Inc.
- Apple and the Apple logo are trademarks of Apple Inc. registered in the USA and other countries. App Store, AppleCare and iCloud are service marks of Apple Inc. ™ and ® Apple Inc. All rights reserved.
- Amazon and Amazon Web Service are trademarks or registered trademarks of Amazon.com, Inc. or its affiliates.

The use of @BactLAB™ and Global Cloud to manage data enables more comprehensive quality control at suppliers and manufacturing facilities in the food production industry. In the future, we are planning on creating a system where it becomes possible for the quality control department (QC/QA division) at a group of companies to monitor the status of every step in the process at each site in real time, from raw material acceptance, processing, production, manufacturing, and deliveries to quality assurance, thus expediting the business of food hygiene inspections in overseas markets.

For service-related questions, contact us at

Nissui Pharmaceutical Co., Ltd.

CSV Promotions Office

Email: bactlab-1@nissui-pharm.jp

For questions related to this project, contact us at

Nissui Pharmaceutical Co., Ltd.

Division of Business Support, IR, Department of Business Planning

Tel: 03-5846-5617 Email: ir@nissui-pharm.jp

110-8736 Tokyo, Taito-ku, Ueno 3-24-6, Ueno Frontier Tower 20F

<https://www.nissui-pharm.co.jp/>

Blank below