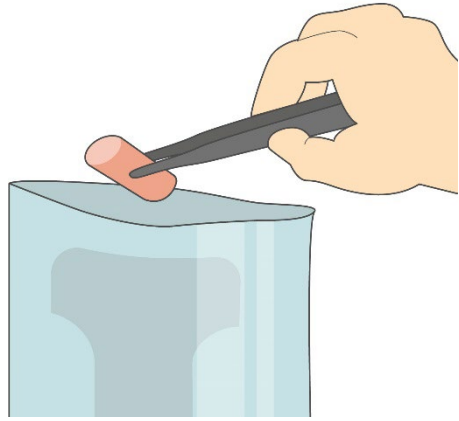


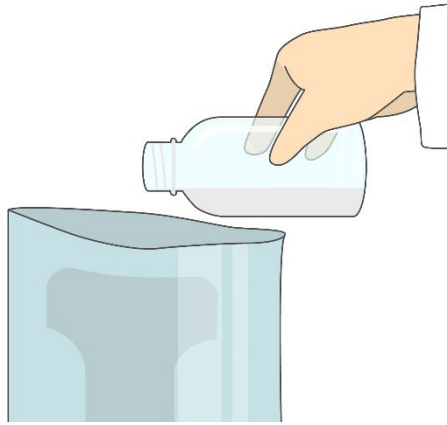
Compact Dry AQ Illustration Manual

Shimadzu Diagnostics Corporation

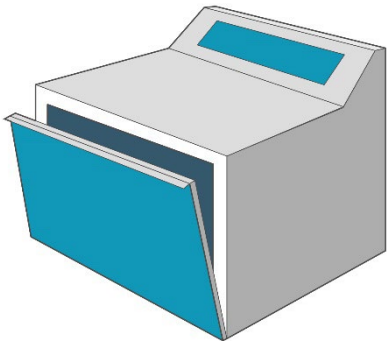


Weigh 50g solid sample

and add 450mL Buffering Solution to the sample.

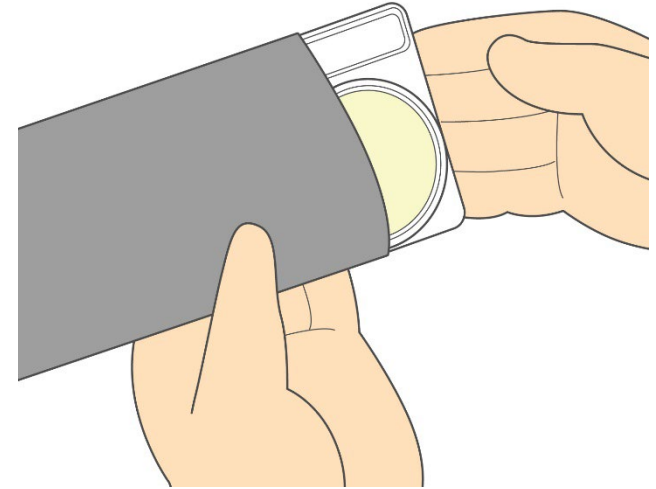
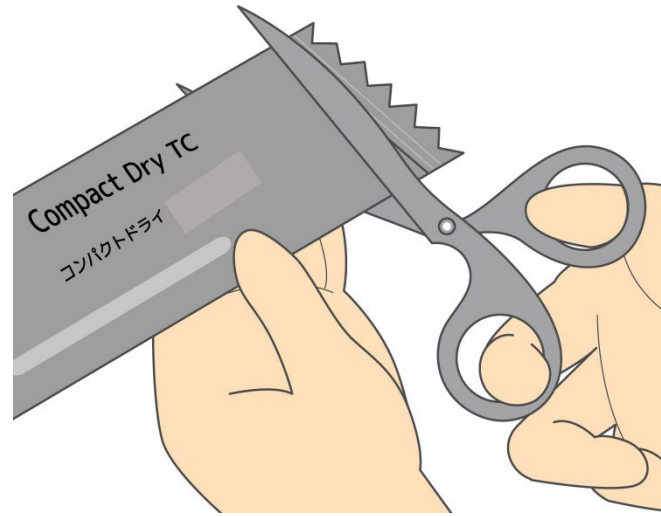


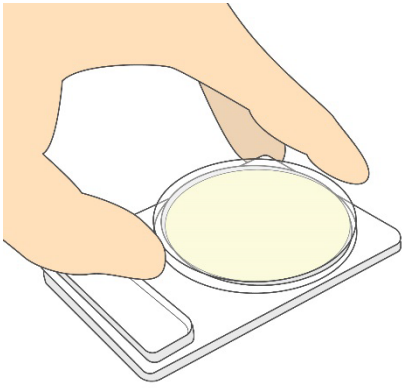
It is recommended to use a stomacher bag with filter to eliminate risks of carry over of tiny pieces of foodstuffs into the surface of the medium.



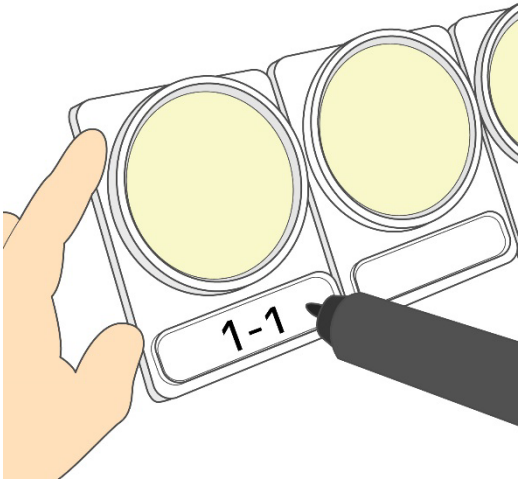
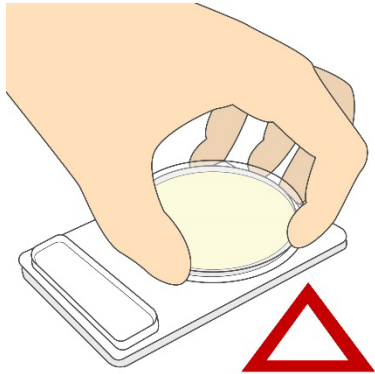
Homogenize this mixed sample by a blender

Open aluminum bag, and take out a set of 4 plates.

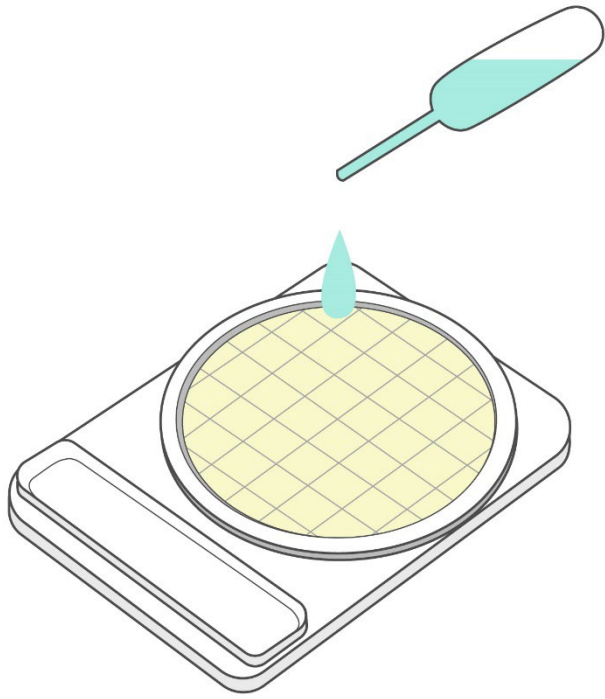




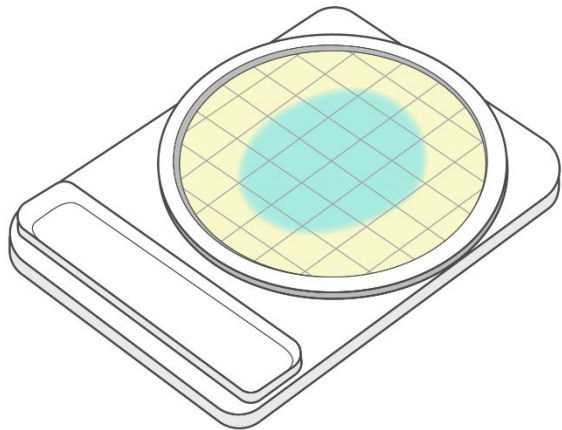
Take off the cap of the plate



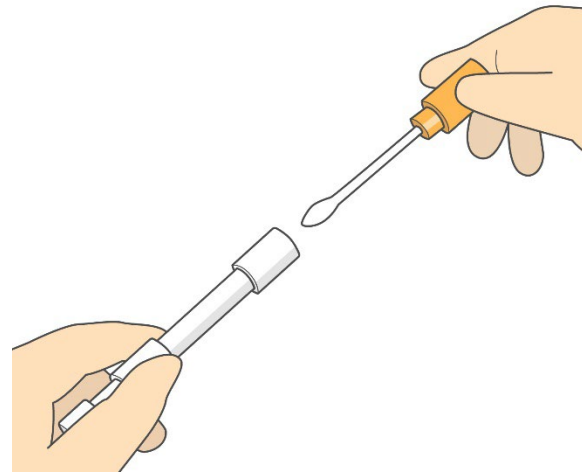
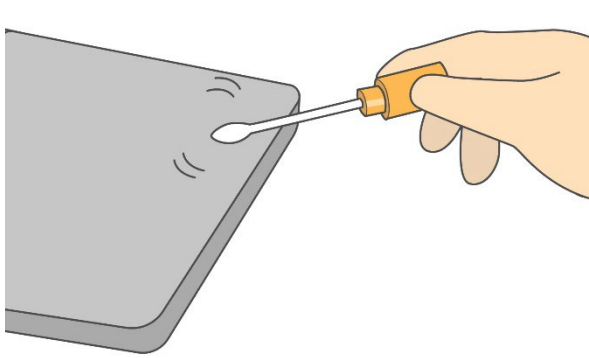
Write the appropriate information on the memorandum section.



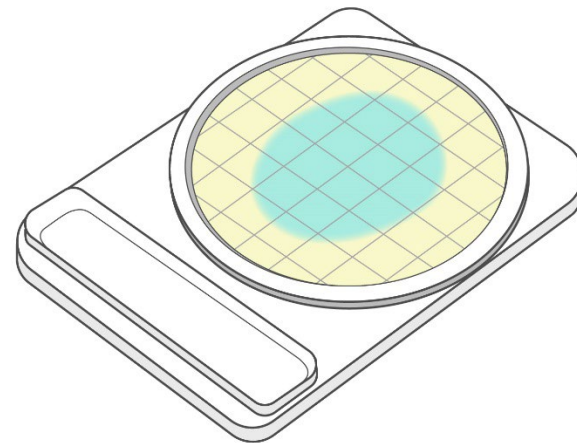
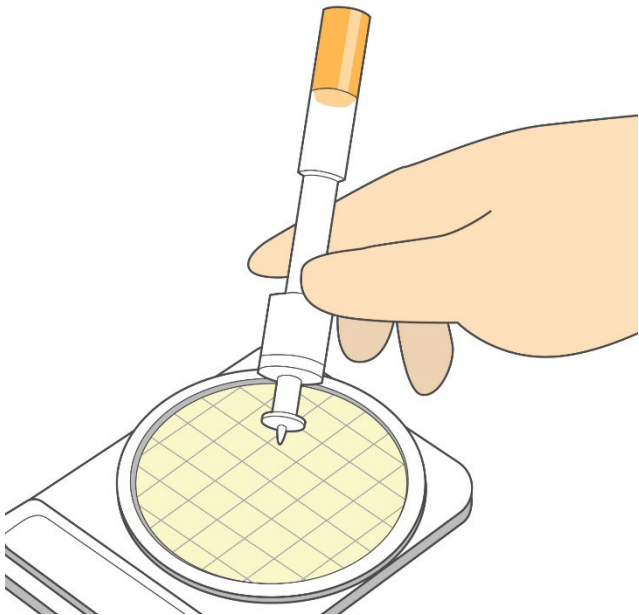
Pipette 1ml of homogenized specimen (to be further diluted if necessary) in the middle of dry sheet of Compact Dry AQ.



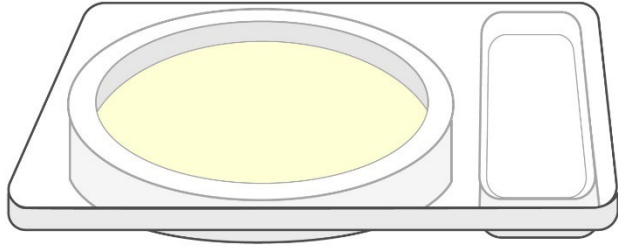
Specimen diffuses automatically and evenly into all over the sheet (total medium of 20 cm²) to transform it into gel within seconds.



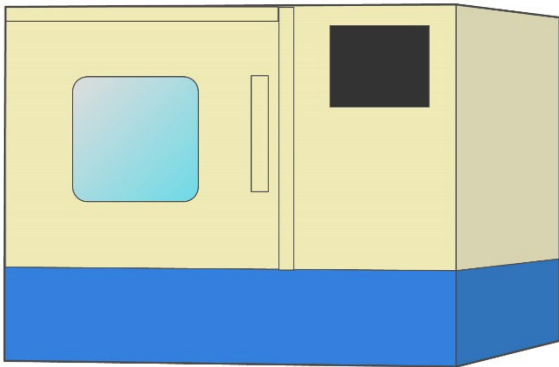
Viable count in swab
test sample



Inoculate 1 ml of
wiping solution (to be
diluted if necessary),
which is obtained from
cotton swab,



Turn over the plate capped



put in an incubator.

Incubate for 44 ± 4 hours at 36 ± 2 °C.

Another plate is incubated for 68 ± 4 hours at 22 ± 2 °C.