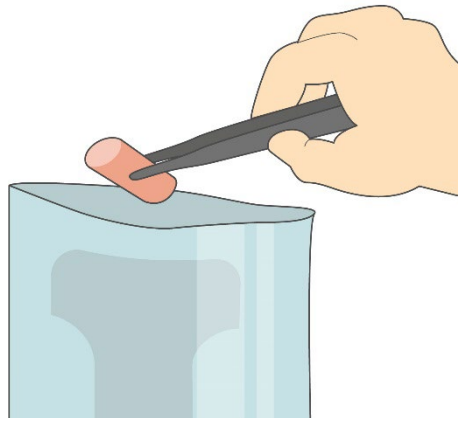


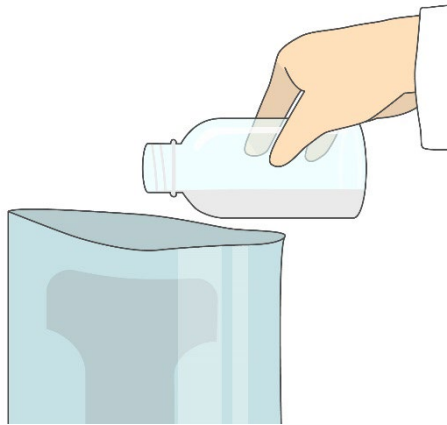
# Compact Dry CC Illustration Manual

Shimadzu Diagnostics Corporation

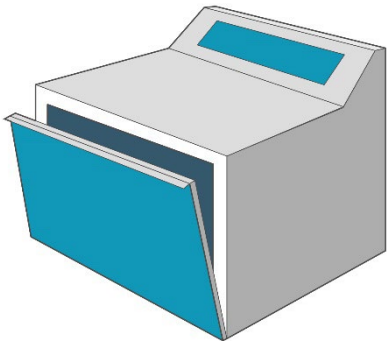


Weigh 50g solid sample

and add 450mL Butterfield's buffered phosphate diluent to the sample.

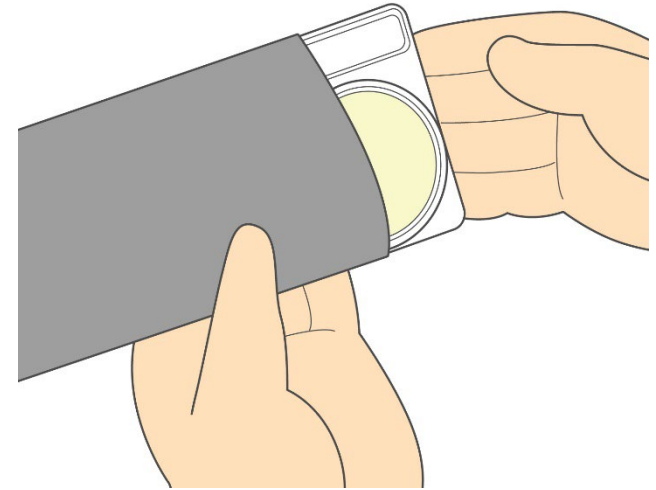
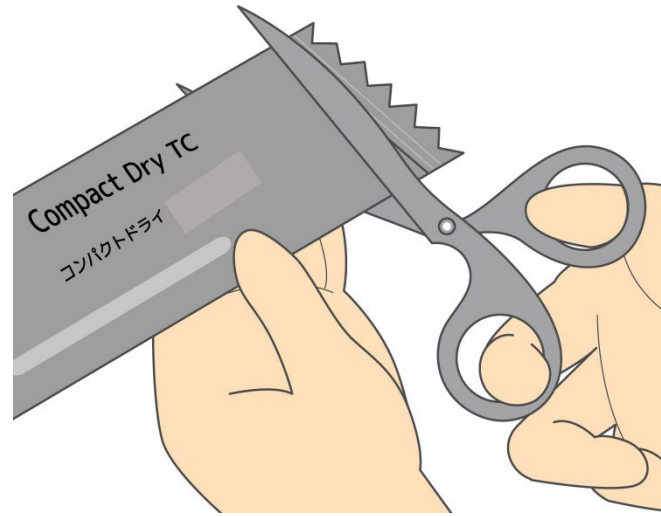


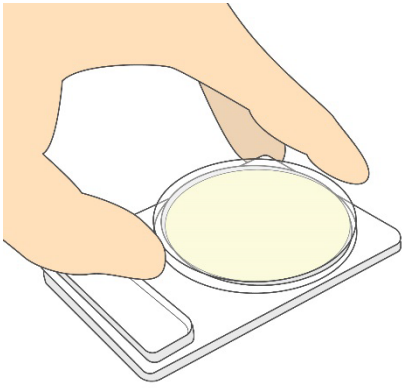
It is recommended to use a stomacher bag with filter to eliminate risks of carry over of tiny pieces of foodstuffs into the surface of the medium.



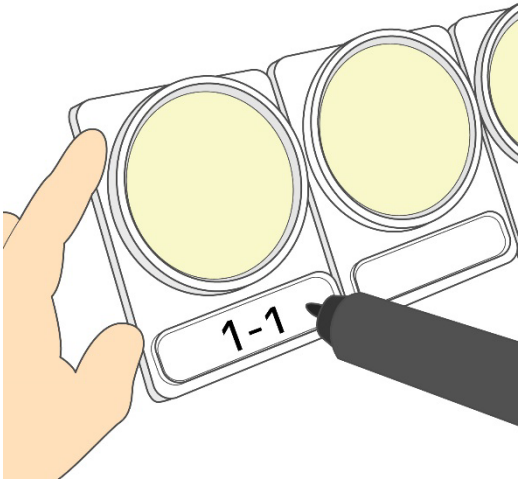
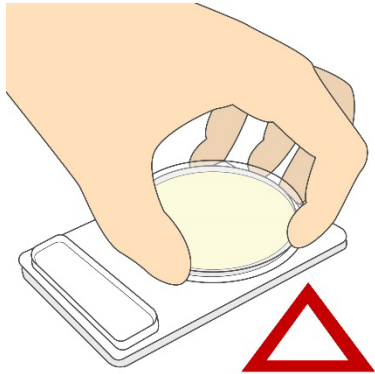
Homogenize this mixed sample by a blender

Open aluminum bag, and take out a set of 4 plates.

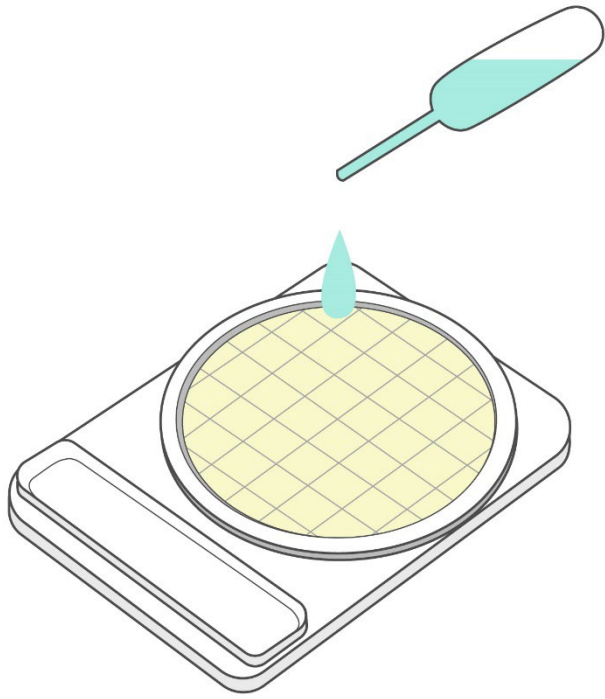




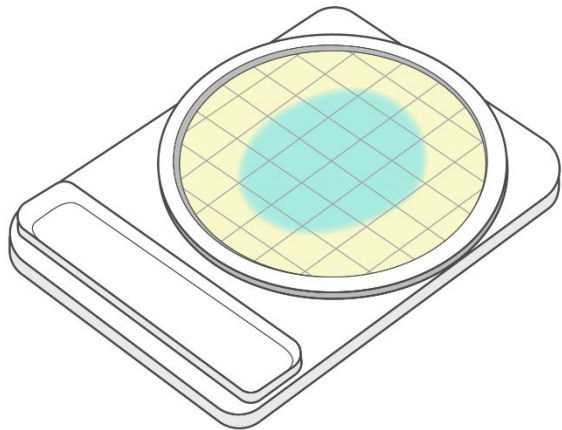
Take off the cap of the plate



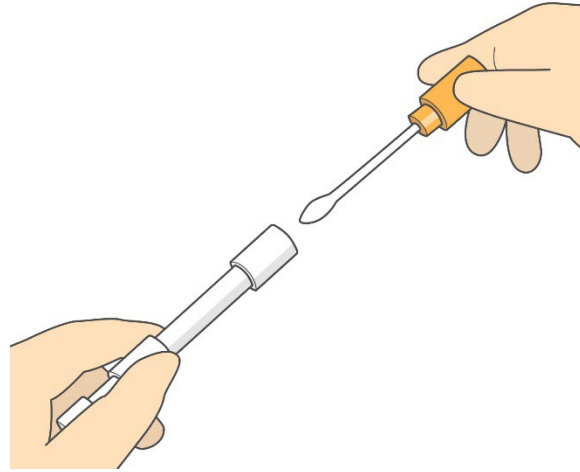
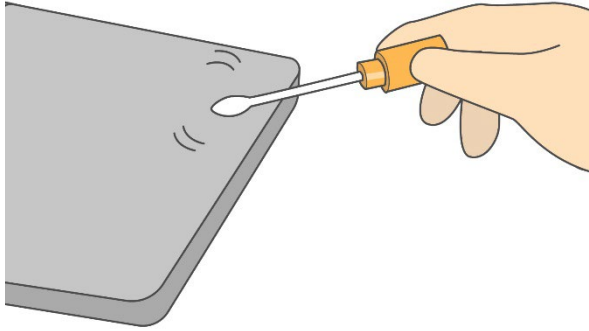
Write the appropriate information on the memorandum section.



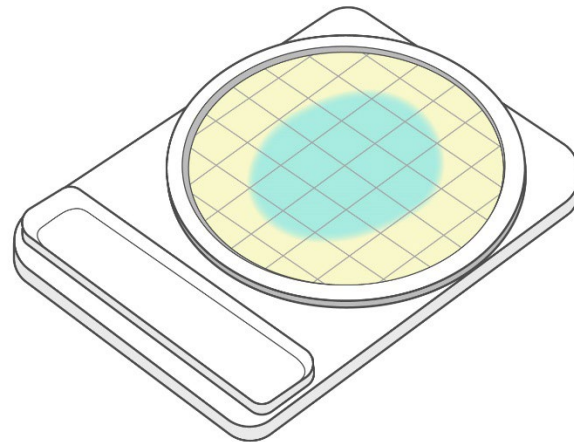
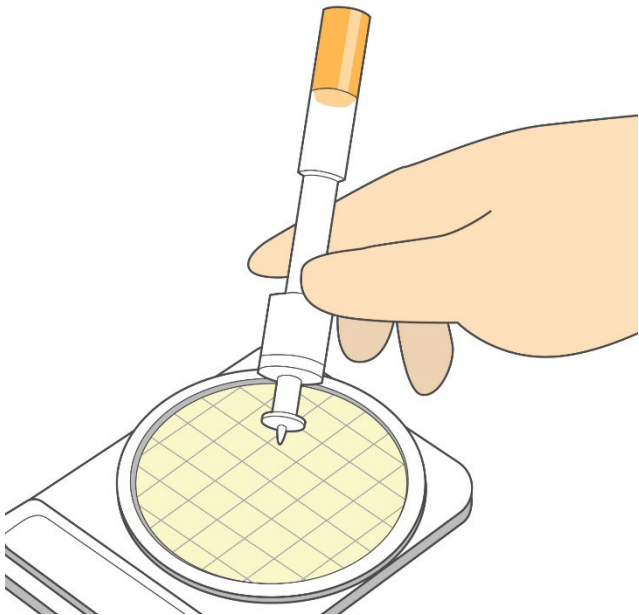
Pipette 1ml of homogenized specimen (to be further diluted if necessary) in the middle of dry sheet of Compact Dry CC.



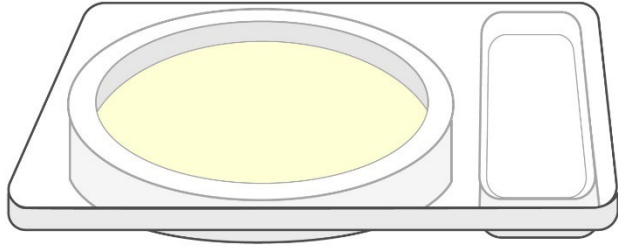
Specimen diffuses automatically and evenly into all over the sheet (total medium of 20 cm<sup>2</sup>) to transform it into gel within seconds.



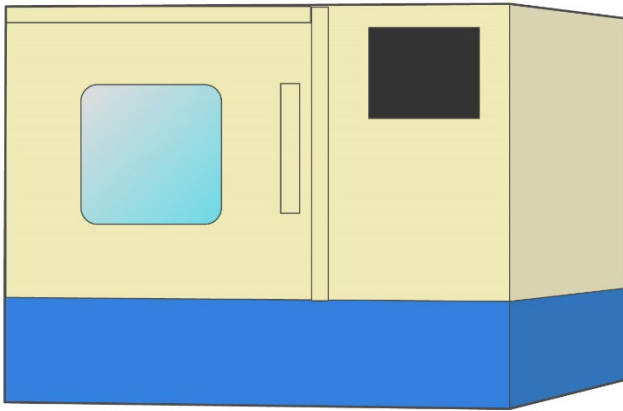
Viable count in swab  
test sample



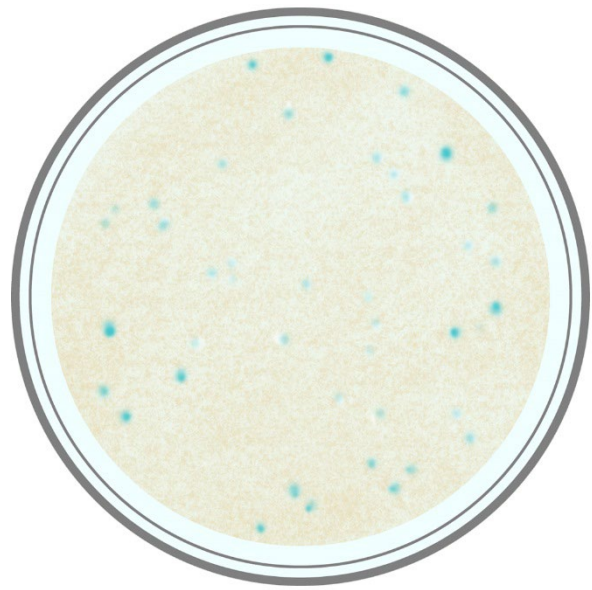
Inoculate 1 ml of  
wiping solution (to be  
diluted if necessary),  
which is obtained from  
cotton swab,



Turn over the plate capped



put in an incubator.  
Incubate 48 hours for CC at 30 °C.



CC

Colonies grown on Compact Dry CC are almost all light blue/Blue colored.

Detection limit of Compact Dry CC is between 1 – 300 cfu/plate.



From backside of the plate, count the number of colored colonies appeared in the medium.

White paper placed under the plate can help to count colonies easier.